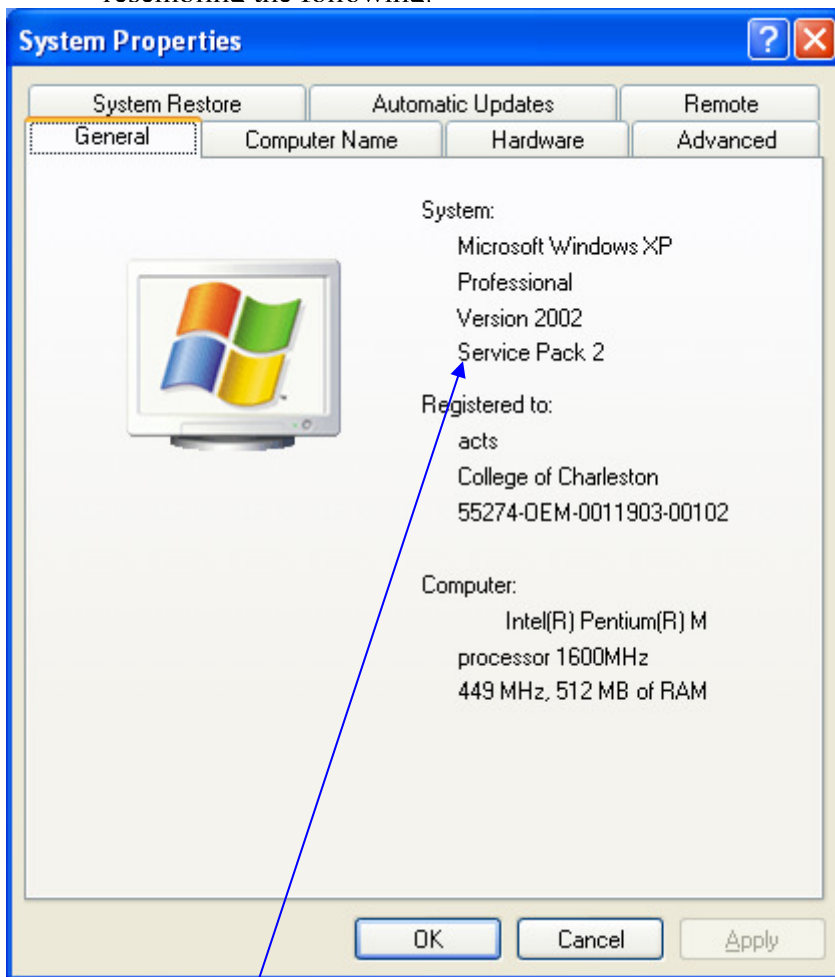


Setting WPA on Windows XP with Service Pack 2

To verify if your machine has Service Pack 2 or not, do the following:

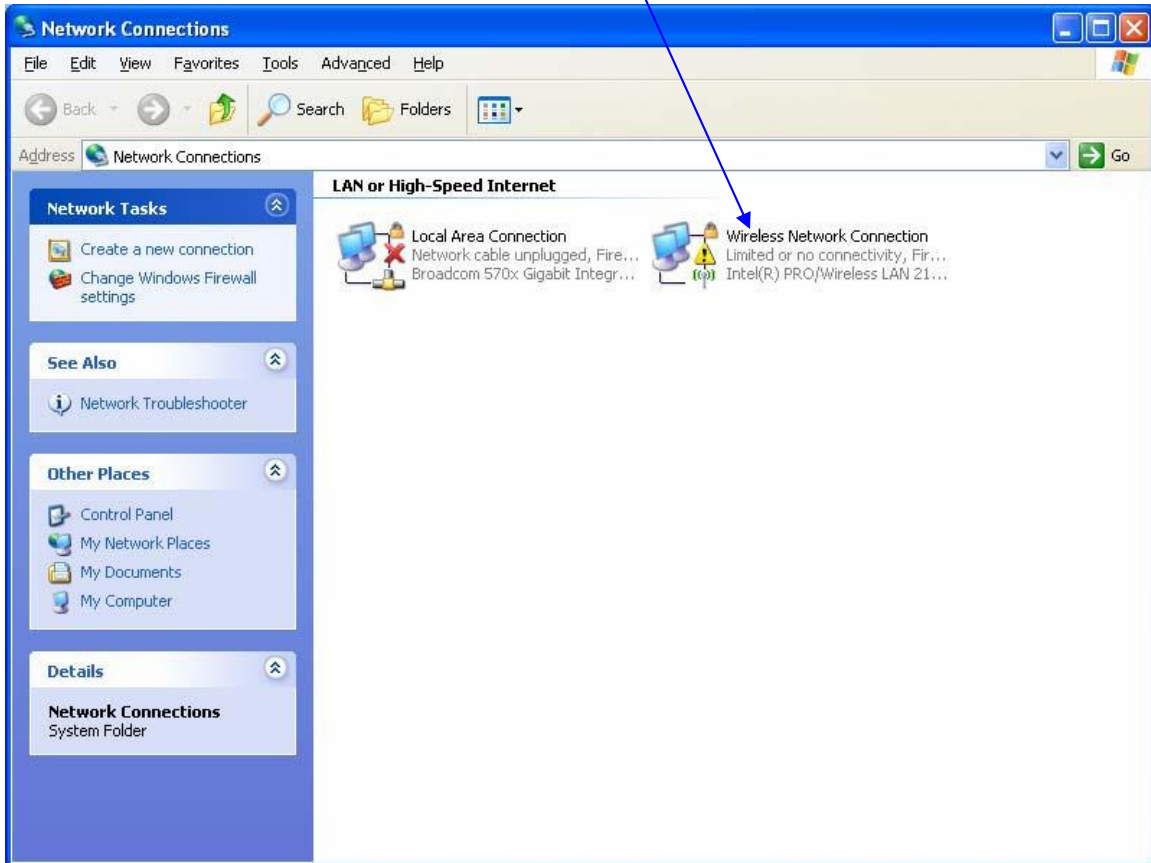
- Right-click **My Computer**, then click **Properties**. You should see a screen resembling the following:



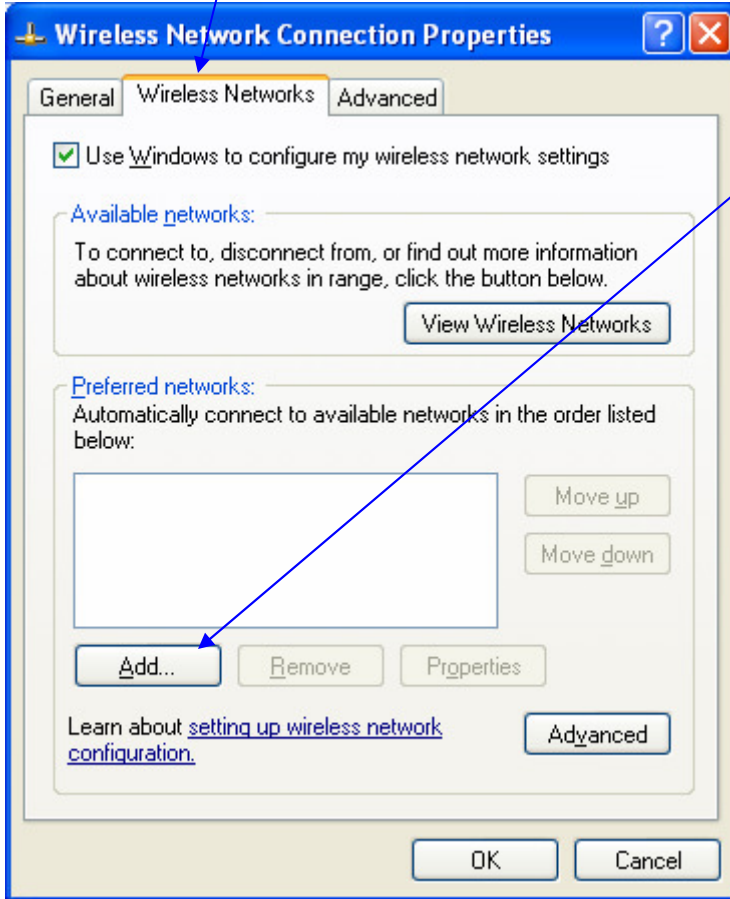
- In the General tab under System, this version of Windows XP has Service Pack 2.

1) Click **Start/Connect To/Show All Connections**.

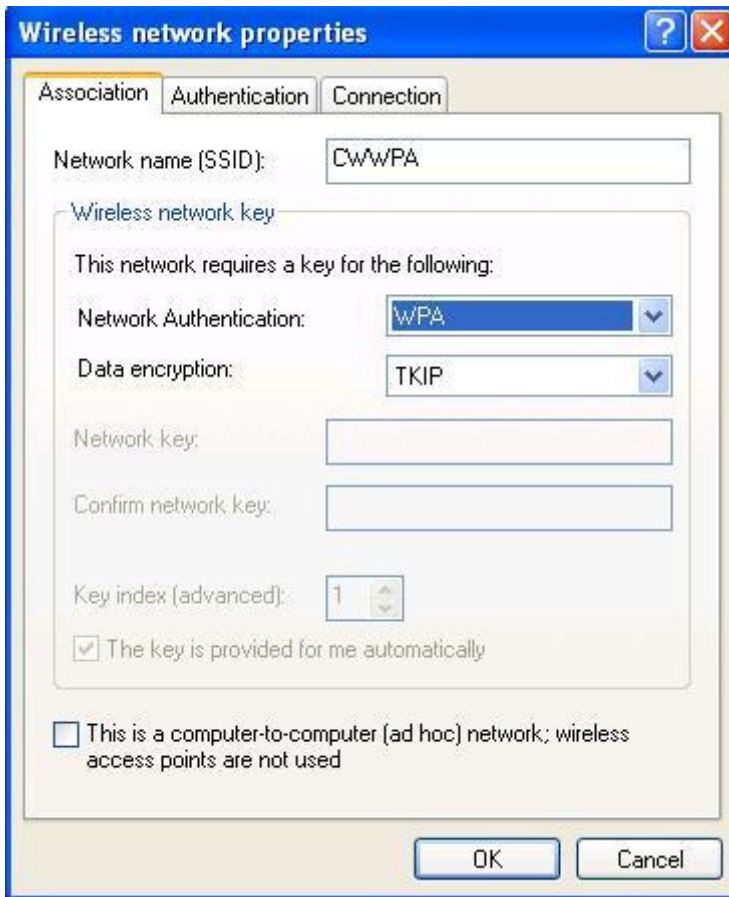
2) Right-click your wireless card and choose **Properties**.



3) Click the **Wireless Networks** tab, then under Preferred networks, choose **Add...**



- 4) Under the **Association** tab, for the Network name (SSID), enter **CWWPA** exactly as it is shown here. Verify that Network Authentication is **WPA**, and set the data encryption to **TKIP**.



The image shows a Windows dialog box titled "Wireless network properties" with three tabs: "Association", "Authentication", and "Connection". The "Association" tab is selected. The "Network name (SSID)" field contains the text "CWWPA". Below this, a section titled "Wireless network key" contains the text "This network requires a key for the following:". Underneath, "Network Authentication" is set to "WPA" and "Data encryption" is set to "TKIP". There are empty text boxes for "Network key" and "Confirm network key". The "Key index (advanced)" is set to "1". A checkbox labeled "The key is provided for me automatically" is checked. At the bottom, there is an unchecked checkbox labeled "This is a computer-to-computer (ad hoc) network; wireless access points are not used". "OK" and "Cancel" buttons are at the bottom right.

Wireless network properties

Association Authentication Connection

Network name (SSID): CWWPA

Wireless network key

This network requires a key for the following:

Network Authentication: WPA

Data encryption: TKIP

Network key:

Confirm network key:

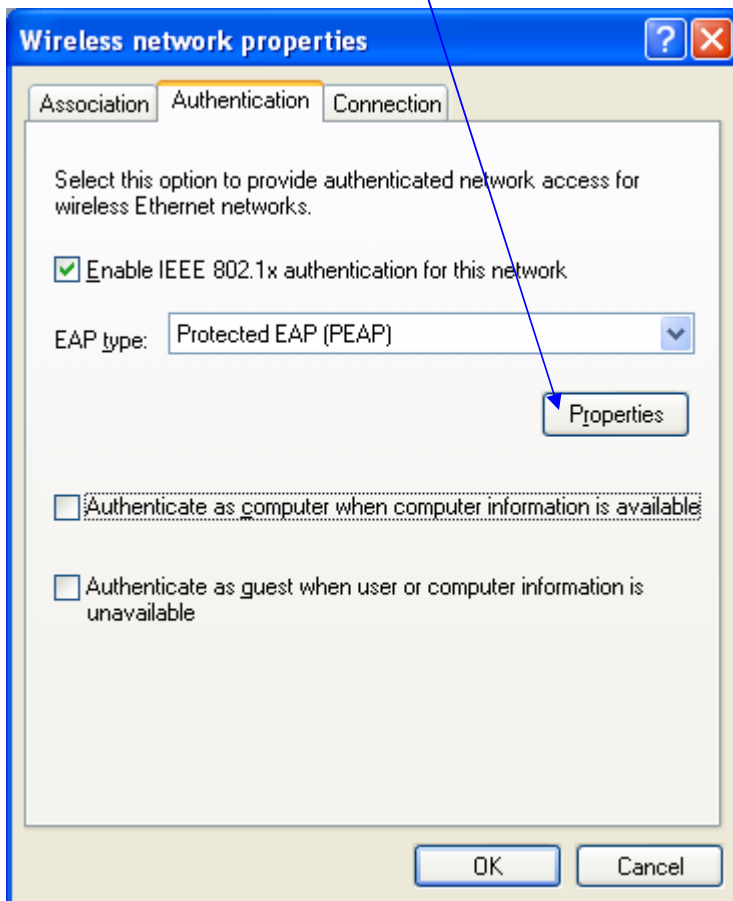
Key index (advanced): 1

The key is provided for me automatically

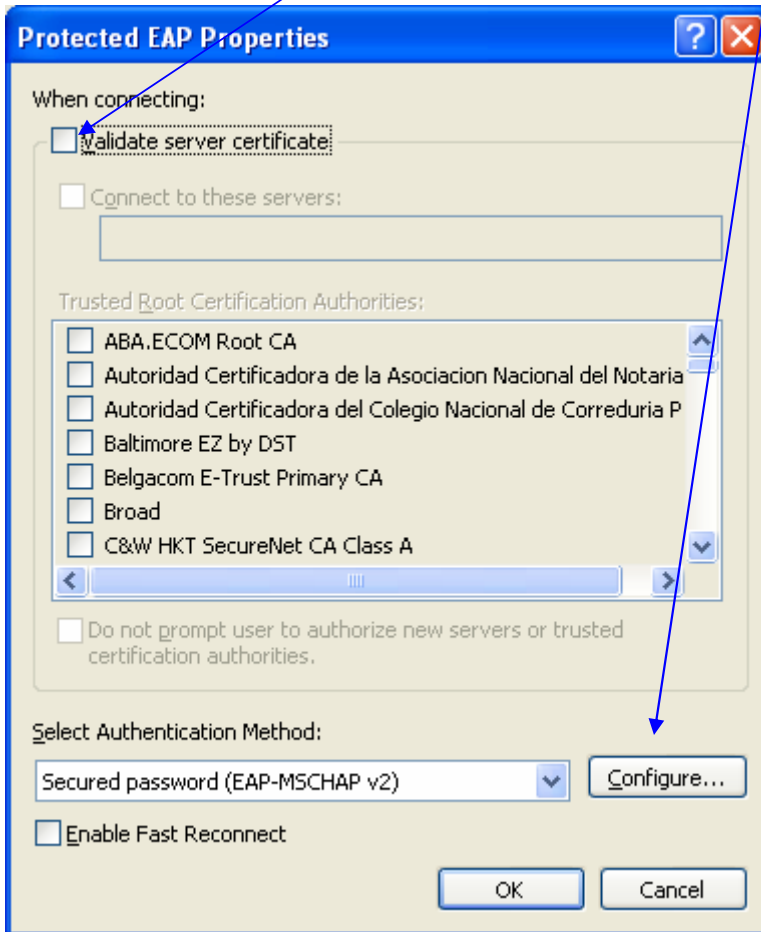
This is a computer-to-computer (ad hoc) network; wireless access points are not used

OK Cancel

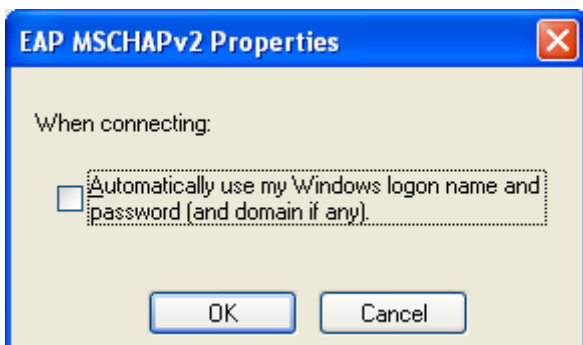
- 5) Click the **Authentication** tab. Make sure there is a check mark by **Enable IEEE 802.1x authentication for this network**. Then next to EAP type, choose **Protected EAP (PEAP)**. Un-check **Authenticate as computer when computer information is available**. Then click the **Properties** button right under EAP type.



6) Un-check **Validate server certificate**. Then click the **Configure** button next to Select Authentication method.



7) Un-check **Automatically use my Windows logon name and password (and domain if any)**. Then click **OK**.



8) Click **OK** on all screens displayed. You should eventually see a message in your taskbar resembling the following:

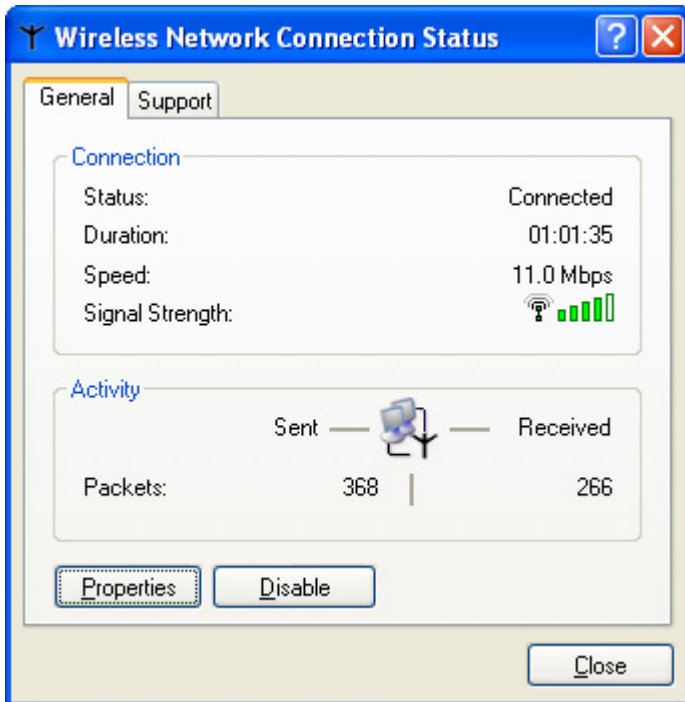


9) Clicking on that balloon will bring up the following dialog box:



10) You just need to enter your Username and password. Leave logon domain blank.
Click **OK** when finished (if the **Wireless Network Connection** balloon continues to show in your system tray, click the **X** in the balloon to close it).

11) Voila! You should now be connected to **CWWPA**! To verify if you are connected, just open a browser and try surfing the web. Or in your system tray, locate your Wireless Network Connection, click it once, and a screen resembling the following should appear:



12) Make sure Status says **Connected**. Signal strength can either be strong or weak depending on your location to the nearest access point when you connect.